



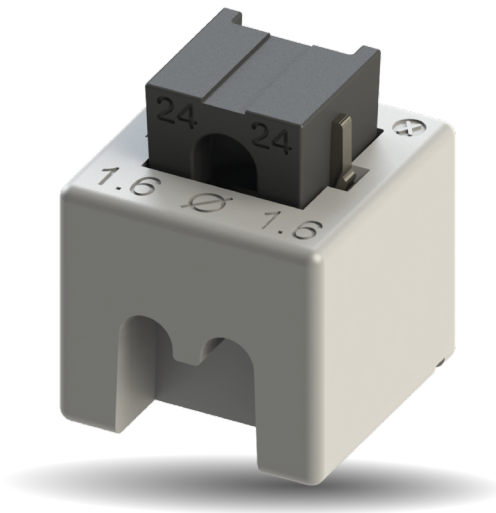
Scan QR Code For  
More Information



STANDARD PRODUCT PORTFOLIO

# INSULATION DISPLACEMENT CONTACT TECHNOLOGY

DETONATOR TECHNOLOGY SOLUTIONS



## KEY FEATURES:

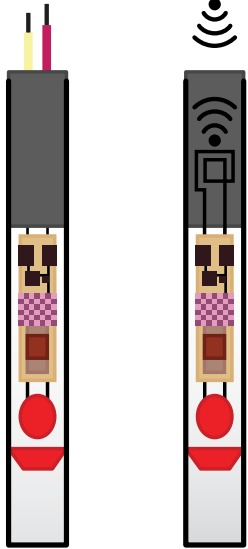
- > IDC is a reliable Cold Weld Termination
- > Connector solutions rated up to 10A/Contact
- > Used in High Shock and Vibration applications

# DETONATOR

TECHNOLOGY SOLUTIONS



## SOLUTIONS



Devices used in the oil and gas industry are subjected to heavy shock and vibration. This requires connectors that provide a flawless wire termination.

Given these environmental conditions our customers have chosen our Insulation Displacement Connector (IDC) Technology based on their reliability and repeatability to provide a "gas tight" cold weld termination. The KYOCERA AVX offers various standard solutions, as well as custom design to meet your needs.

## COLLABORATING IN DEVELOPMENT

KYOCERA AVX excels in 1 on 1 product development with customers. We have over 60+ years of proven collaborative development.

Our design engineers work directly with customers to understand the problem, and design constraints and validate standard product solutions before proposing creative solutions that accommodate our customer's various needs.

## BENEFITS OF IDC TECHNOLOGY

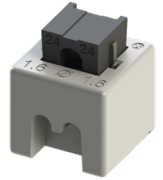
- Reliable "Cold Weld", gas tight termination
- No crimp/solder, uses solid or stranded wires
- Rated for carrying power/signal to the board
- Applications for Daisy-Chain or connecting PCB's

## WHY PARTNER WITH US?

- Provide faster and flexible service
- Collaboration partnership improves the results (1+1=3)
- Global footprint, keeps us close to our customers
- Broad connector portfolio supporting harsh environment applications

### 9179 (WtW) IDC Splice

- 18 - 24 AWG wire
- Up to 10Amps/contact
- Ease of use, no wire stripping
- Use split-joint pliers to activate splice
- ~40 to 125 °C



### 9715/9215 & Custom (WtW) IDC Branch

- 18 - 20 AWG wire
- Up to 8 - 9 Amps / contact
- Meets JASO D616 Std.
- IPX9K rating waterproof
- ~40 to 85 °C



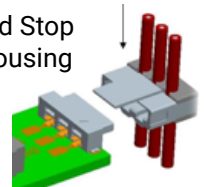
### 9176-400/800 (WtB) IDC Low Profile

- 22 - 30 AWG wire
- Rated 7 Amps / contact
- Low 2.5mm mated height
- ~40 to 125 °C
- 1 - 4 pos. (colored options)



### Custom (WtB) IDC Plug/Recept.

- 22 - 24 AWG / stranded wire
- Positive latch plug
- IDC Pass Thru or End Stop
- High temp plastic housing
- ~40 to 125 °C



### Custom (WtW) IDC Rotary Plug

- 22 - 30 AWG
- Rotate Hsg. 30 °C to active IDC
- Accepts multiple wire sizes
- Up to 5 positions
- ~40 to 125 °C

