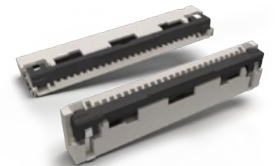
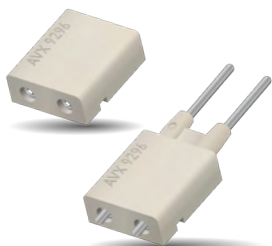




## FINE PITCH & INDUSTRIAL CONNECTORS



## PRODUCT SPECIFICATIONS

BOARD-TO-BOARD							
	0.35mm Pitch				0.4mm Pitch		
	5861	5863	5897	7129	5843	5804	5846
Image							
Pitch (mm)	0.35	0.35	0.35	0.35	0.35	0.40	0.40
Stack H. (mm)	0.60	0.80	0.80	0.70	0.8	0.9 / 1.5 / 2.0	3.00
Width (mm)	1.95	2.30	2.30	2.20	2.40	2.40	5.80
# of Positions	6 to 60	50 and 60	78	2 / 4	12 to 48	10 to 70	20 to 80
Current	0.3A/Sig. 5.0A/Pwr.	0.3A/Sig. 5.0A/Pwr.	0.3A/Sig. 3.0A/Pwr.	0.4A/Sig. 10.0A/2Pwr.	0.3A/Sig.	0.3A/Sig.	0.4A/Sig.

FLOATING BOARD-TO-BOARD				
	0.4mm	0.50mm Pitch		
	8152	5655	5656	5652
Image				
Pitch (mm)	0.40	0.50	0.50	0.50
Stack H. (mm)	3.50	4.0 to 7.0	17.0 to 19.0	15.0 to 25.0
Floating (mm)	XY +/- 0.4mm	XY +/- 0.5mm	XY +/- 1.0mm	XY +/- 0.85mm
# of Positions	30	40 to 100	40, 52, & 60	60 to 100
Current	0.3A/Sig.	0.7A/Sig. 3.0A/Pwr.	0.5A/Sig. 2.0A/Pwr.	0.6A/Sig. 3.0A/Pwr.
High-Speed	PCIe Gen. 3 ~8Gbps	MIPI D-PHY ~2.5Gbps	—	PCIe Gen. 4 ~16Gbps

FPC/FFC														
	0.2mm	0.3mm Pitch			0.4mm Pitch		0.5mm Pitch							
	6866	6844	6293	6841	6824	6287	6277	6298	6809	6811	6284	6808	6806	6815
Image														
Pitch (mm)	0.20	0.30	0.30	0.30	0.40	0.40	0.50	0.50	0.50	0.50	0.50	0.50	0.50	0.50
Height (mm)	0.95	0.95	0.90	3.60	0.93	1.20	0.90	0.90	0.93	1.28	1.50	1.50	1.75	1.90
Width (mm)	3.20	3.20	3.90	2.95	2.70	4.90	3.50	3.70	3.75	4.79	4.00	5.30	4.95	4.95
# of Positions	21 to 71	11 to 61	9 to 39	15 to 51	4 to 22	14 to 76	3 to 6	3 to 8	4 to 40	4 to 16	5 to 30	7	8 to 80	96 to 100
Current	0.2A/Sig.	0.2A/Sig.	0.2A/Sig.	0.2A/Sig.	0.4A/Sig.	0.4A/Sig.	0.4A/Sig.	0.4A/Sig.	0.5A/Sig.	0.5A/Sig.	0.4A/Sig.	0.5A/Sig. 4.0A/3 Cont.	0.5A/Sig.	0.5A/Sig.

FPC/FFC									
	0.5mm Pitch							1.0mm Pitch	
	6288	6892	6251	6801	6214	6274	6244	6232	
Image									
Pitch (mm)	0.50	0.50	0.50	0.50	0.50	0.50	0.50	1.00	1.00
Height (mm)	2.00	2.20	5.45	5.50	4.10	4.40	4.10	3.0 (RA) 5.1 (VT)	3.0 (RA) 5.5 (VT)
Width (mm)	6.50	6.45	3.50	4.90	3.40	4.10	3.45	7.0 (RA) 5.0 (VT)	5.5 (RA) 3.0 (VT)
# of Positions	8 to 80	30 to 68	10 to 64	20 to 50	6 to 30	31 to 50	6 to 30	3 to 30	3 to 30
Current	0.4A/Sig.	0.5A/Sig.	0.4A/Sig.	0.4A/Sig.	0.4A/Sig.	0.4A/Sig.	0.4A/Sig.	0.5A/Sig.	0.5A/Sig.

ONE-ACTION LOCK FPC/FFC			
0.5mm Pitch			
6817		6810	
Image			
Pitch (mm)	0.50	0.50	0.50
Height (mm)	2.60	5.32	4.10
Width (mm)	5.90	2.90	6.70
# of Positions	10 to 50	10 to 50	10 to 60
Current	0.5A/Sig.	0.5A/Sig.	0.5A/Sig.

\* "V-by-One" is registered trademarks of THine Electronics, Inc.

	CARD-EDGE		SHIELD LOCKS		WIRE-TO-BOARD			WIRE BRANCH	
Series	6411		8069		8041	8040	8005	9215	9715
Image									
Type	H2.3 Key B, E, M	H3.2 Key B, E, M	H1.8 Shield Case t:0.2mm	H3.0 Shield Case t:0.2mm	AWG #32	AWG #32	AWG #30 to 32	IPX7 Splash-Proof	IPX9K Water-Proof USCAR-2
Pitch (mm)	0.50	0.50	—	—	0.90	1.00	1.27	—	—
Height (mm)	2.15	3.12	1.80	3.00	0.90	1.40	3.61 (VT), 1.90 (RA)	—	—
# of Positions	67	67	—	—	2	2	2	1	1
Current	0.4A	0.4A	0.5A	0.5A	1.0A	1.0A	1.0A	Copper Wire: 3.0 to 10.0A Aluminum Wire: 9.0A	Copper Wire: 9.0A Aluminum Wire: 8.0A / 9.0A



# INDUSTRIAL AND FINE PITCH CONNECTORS



## PRODUCT SPECIFICATIONS

### 2-PIECE CONNECTORS & CONTACTS

Series	10 / 20- 9159-100	13- 9159-100	14 / 24- 9159-100	11 / 22- 9159-100	9159-400
Image					
# of Positions	2 - 6	2 - 6	2 - 6	2 - 6	1
Max Current Rating	5A/Contact	5A/Contact	5A/Contact	5A/Contact	5A

### CARD-EDGE

Series	9159-000	9159-060	9159-500 / 9159-550	9159-600 / 9159-650	9159- 700 / 760
Image					
# of Positions	2 - 5	4, 6, 8, 10	2 - 6	4, 6, 8, 10, 12	4 - 12
Max Current Rating	3A/Contact	3A 4/6p, 2.5A 8/10p	2A/Contact	2.5A/Contact	2A 4 - 8p, 1.5A 10 - 12p

### COMPRESSION

Series	9155- 000 / 050	9155- 020	9155- 100	9155- 200 / 250	9155- 300	9155- 400	9155- 500	9155- 600	9155- 700	9155- 800	9148- 000	9158- 000	9188- 000	9258- 000
Image														
# of Positions	3 - 5	2 - 5	2 - 3	2 - 5	2 - 6	2 - 6	2 - 5	1	2 - 6	2 - 6	8	16 - 3	4, 6,	8
Max Current Rating	3A/ Contact	2p - 3p: 3A/Contact 4p - 5p: 2A/Contact	3A/ Contact	3A/ Contact	3A/ Contact	5A/ Contact	3A/ Contact	3A	2p - 4p: 2A/Contact 5p - 6p: 1.5A/ Contact	2p - 4p: 2A/Contact 5p - 6p: 1.5A/ Contact	1A/ Contact	1A/ Contact	1A/ Contact	1A/ Contact
Contact Pitch	2.5mm	1.27mm	2.5mm	2.5mm	3mm	4mm	2.5mm	-	2mm	2mm	1mm	1mm	1mm	1mm

### INSULATION DISPLACEMENT

Series	6791-000	9175-000	9175-700	9176-000	9176-400	9176-500	9176-600 / 9176-650	9176-700	9176-800	9177-000	9177-500	9177-600
Image												
Wire Size	Cable OD 2.33 - 3.1mm	26 - 30 AWG	26 - 30 AWG	18 - 24 AWG	22 - 30 AWG	18 - 24 AWG	18 - 24 AWG	18 - 24 AWG	22 - 30 AWG	14 - 20 AWG	12 - 18 AWG	12 - 18 AWG
# of Positions	1	2 - 3	2 - 3	1 - 3	1	1	1	1 - 5	1 - 4	1 - 3	1	1
Max Current Rating	0.5A (Cable Dependent)	1A/Contact	1A/Contact	10A/ Contact	6A	10A	9A	10A/ Contact	7A/Contact	15A/ Contact	15A	15A

### POKE-HOME

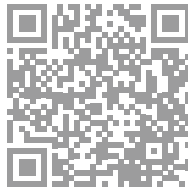
Series	9286-100 / 9286-250	9286-000 / 9286-200	9286-300	9296-000	9296-100	9296-11X	9296-200 / 9296-400	9296-500 / 9296-550	9296-600
Image									
Wire Size	18 - 26 AWG	18 - 24 AWG	12 - 18 AWG	12 - 28 AWG	18 - 26 AWG	12 - 18 AWG	18 - 26 AWG	18 - 26 AWG	18 - 22 AWG
# of Positions	4, 6, 8	1 - 6	1	1	1	1	1 - 8	1 - 6	1
Max Current Rating	10A Total	8A	15A	20A	15A	17A	10A/Contact	7A/Contact	8A/Contact



## ▶ Coming Soon... Your Next Connector!

KYOCERA AVX has the interest & capability to design customized solutions, it can be an extension to an existing range or development of new products.

*The KYOCERA AVX Company E-Newsletter contains information / updates on exciting news about what's going on at KYOCERA AVX. From news products, to events, technical articles, and more...*



**NORTH AMERICA**  
Tel: +1 864-967-2150

**CENTRAL AMERICA**  
Tel: +55 11-46881960

**EUROPE**  
Tel: +44 1276-697000

**ASEAN/INDIA/TAIWAN**  
Tel: +65-6271-0500

**CHINA**  
Tel: +86-21-5877-5366\*511

**JAPAN**  
Tel: +81-75-604-3640

**KOREA**  
Tel: +82-2-3463-3538

▶ [WWW.KYOCERA-AVX.COM](http://WWW.KYOCERA-AVX.COM)

