

TECHNICAL PAPER

Polymer Solid Electrolytic Capacitors for Automotive Applications

**Jaroslav Tomasko
Slavomir Pala**

KYOCERA AVX Components Corporation
One AVX Boulevard
Fountain Inn, S.C. 29644 USA

Abstract

Tantalum electrolytic capacitors are constructed using a sintered pellet of powdered tantalum as the anode of the device. A grown oxide layer on the contoured surface of the pellet acts as the dielectric insulator, and a cathode terminal is formed using either a conventional MnO_2 electrolyte or a conductive polymer to sufficiently contact the oxide layer.

POLYMER SOLID ELECTROLYTIC CAPACITORS FOR AUTOMOTIVE APPLICATIONS

INTRODUCTION

Tantalum electrolytic capacitors are constructed using a sintered pellet of powdered tantalum as the anode of the device. A grown oxide layer on the contoured surface of the pellet acts as the dielectric insulator, and a cathode terminal is formed using either a conventional MnO_2 electrolyte or a conductive polymer to sufficiently contact the oxide layer. These two varieties of cathode construction are shown in Figure 1.

The final capacitor can be packaged in many forms, and the typical J-lead surface mount construction is shown in Figure 2. The capacitive structure is bonded to a molded case and electrically interfaced using carbon as a separation layer and silver for connection with the lead frame.

Tantalum capacitors are widely known for their superior performance, especially in high reliability, harsh environment applications. Using a solid polymer electrolyte extends this performance by reducing electrical series resistance (ESR) and enabling higher voltage operation. This article discusses, in particular, the advantages that automotive solid polymer electrolytic capacitors bring; standard ranges are not tested per AEC-Q requirements and are therefore not dedicated to the harsh conditions of automotive applications.

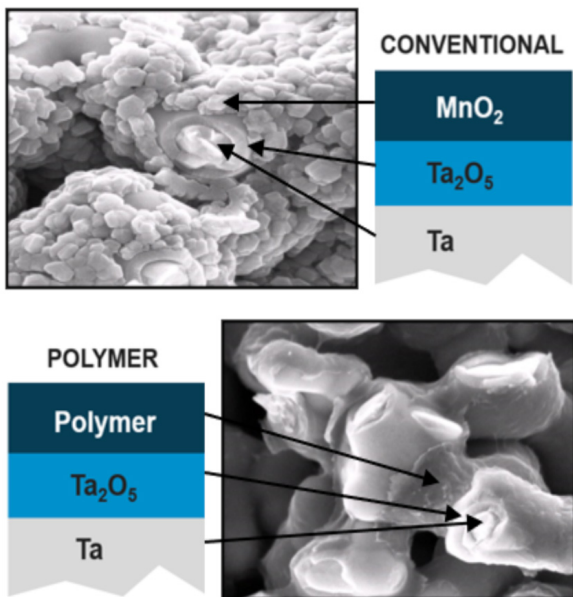


Figure 1: - Conventional electrolyte compared to conductive polymer capacitor construction

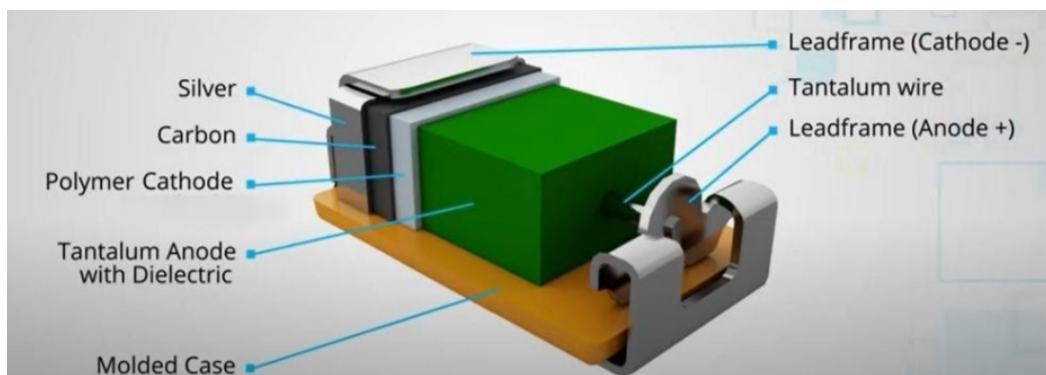
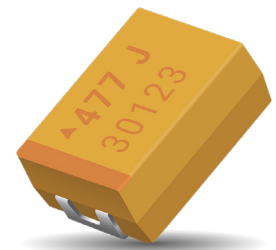


Figure 2: Tantalum surface mount case construction



POLYMER SOLID ELECTROLYTIC CAPACITORS FOR AUTOMOTIVE APPLICATIONS

THE POLYMER ADVANTAGE

In general, tantalum capacitors offer significant benefits compared to other capacitor families. One example is the stability of tantalum bulk capacitance across applied DC voltage. In contrast with Hi-Cv MLCC class II dielectric capacitors, for instance, where rapid capacitance drop with applied voltage could be more than 50% at half of the rated voltage, tantalum devices maintain their capacitance across the entire rated voltage range. In practice, a bank of MLCCs can be replaced with a smaller number of polymer capacitors. This solution occupies less PCB space and provides various other performance benefits.

When considering polymer solid tantalums specifically, ESR is often a primary concern. A conventional tantalum capacitor based on MnO_2 electrolyte has a relatively high ESR due to the low conductivity of this material. On the other hand, conductive polymer capacitors have greatly improved conductivity, leading to a significant reduction in ESR through the entire operating frequency range. Figure 3 shows a comparison of polymer and traditional tantalum capacitors.

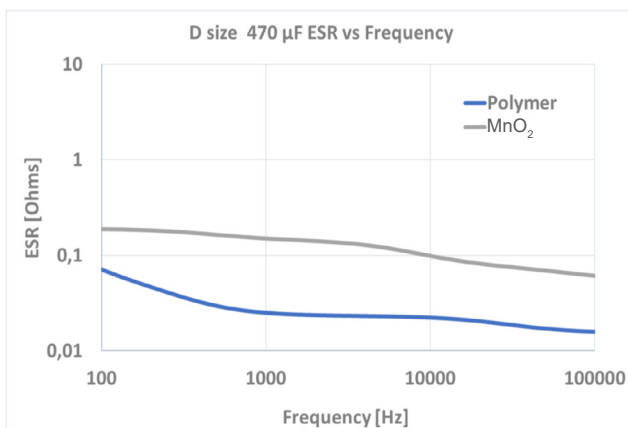


Figure 3: ESR comparison of D Case 470µfd polymer and traditional MnO_2 tantalum capacitors

In addition to ESR reduction, the polymer capacitor exhibits a unique self-healing mechanism. Figure 4 shows that dielectric failures result in a higher current path and associated self-healing. This, in turn, evaporates/carbonizes the polymer material and encapsulates the failure location with a non-conductive polymer layer. The polymer material does not contain any oxygen, unlike MnO_2 technology, and is non-flammable. As a result, polymer capacitors are more reliable, safer, and less sensitive to inrush current and higher ripple current limits.

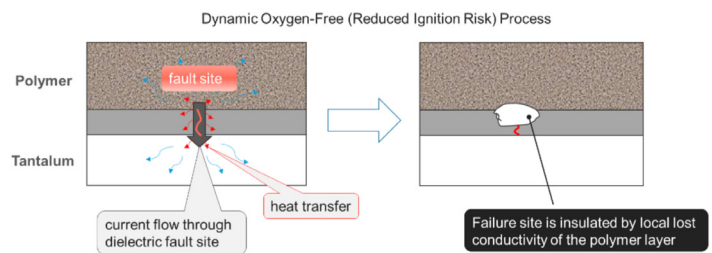


Figure 4 - Self-healing mechanism of polymer capacitors

KYOCERA AVX tantalum polymer capacitors are qualification tested to 2,000 hours to exceed the 1,000 hour automotive standards. But to further validate the reliability of these polymer solid electrolytic capacitors, KYOCERA AVX did additional testing to 3,000 hours at 125°C. Figure 5 (left) demonstrates that even after 3,000 hours, the ESR shift is still well below the 100% threshold. Similarly, the change in capacitance, shown at right in Figure 5, remained less than -2.0% out to 3,000 hours. This is 10x better than the -20% limit for lifetime capacitance change. This data validates the long-term stability of polymer capacitors in harsh environments, a necessary characteristic for automotive applications in particular.

POLYMER SOLID ELECTROLYTIC CAPACITORS FOR AUTOMOTIVE APPLICATIONS

THE POLYMER ADVANTAGE

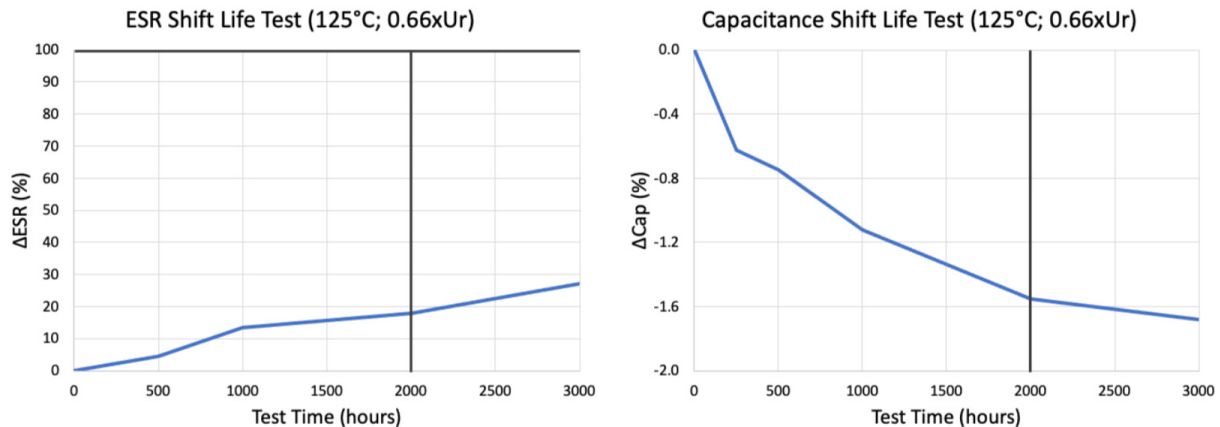


Figure 5 - Polymer capacitor ESR and bulk capacitance change versus time at high temperature

AUTOMOTIVE APPLICATIONS

The inherent performance benefits of tantalum polymer solid capacitors make them an ideal candidate for harsh environment automotive applications. These capacitors offer a host of unique properties, including:

- Meets and exceeds requirements of AEC-Q200
- Conductive polymer electrode for lower ESR
- Humidity 85°C/85%RH, Vr, >1,000 hours
- -55 to +125°C/150°C operation temperature
- DCL 0.1CV (at UR)
- Full voltage range: 2.5-50 V
- 3x reflow 260°C compatible

KYOCERA AVX's qualification of tantalum polymer solid capacitors meets and exceeds the requirements of AEC-Q200. Extended temperature capability offering stable performance up to 2,000 hours at 125°C meets the lifetime requirement of approximately 15 years for vehicle applications at 85°C. The following two tables present available capacitors for automotive designs at normal and extended temperature ranges.

POLYMER SOLID ELECTROLYTIC CAPACITORS FOR AUTOMOTIVE APPLICATIONS

AUTOMOTIVE APPLICATIONS

Capacitance		Rated Voltage								
Cap μ F	Code	2 V	4 V	6 V	10 V	16 V	20 V	25 V	35 V	50 V
2.2	225									B [0300]
3.3	335									B [0300]
4.7	475								B [0150] B [0200]	
6.8	685									
10	106						B [0150]		D [0070]	D [0090]
15	156					B [0090]	B [0150]	D [0070]	D [0125]	
22	226			B [0070]	B [0070]	B [0070]	D [0070]	D [0100]	D [0075] D [0100]	
33	336			B [0070]	B [0070]	D [0070] Y [0070]	D [0070]	D [0060] D [0100]	E [0065] U [0070]	
47	476			B [0070]	B [0070]	D [0070] Y [0070]	D [0070] Y [0070]	E [0050]	E [0075] U [0070]	
68	686			B [0070]	D [0025] D [0040]	D [0070]		E [0060]		
100	107	B [0055] B [0070]	B [0055] B [0070]		D [0025] D [0025]		E [0040]	U [0070]		
150	157			D [0025] D [0040]	D [0025]	D [0065] E [0025] E [0040]		U [0100]		
220	227		D [0025] Y [0025]	D [0025]	D [0025]					
330	337		D [0025]	D [0025]	E [0070]	E [0070]				
470	477		D [0025]		E [0070]					

Figure 6 - AEC-Q200 qualified values of TCQ Polymer series (letter code indicates size and ESR value in brackets)

Capacitance		Rated Voltage		
Cap μ F	Code	25 V	35 V	50 V
10	106			E [0150]
33	336	D [0100]	E [0150]	

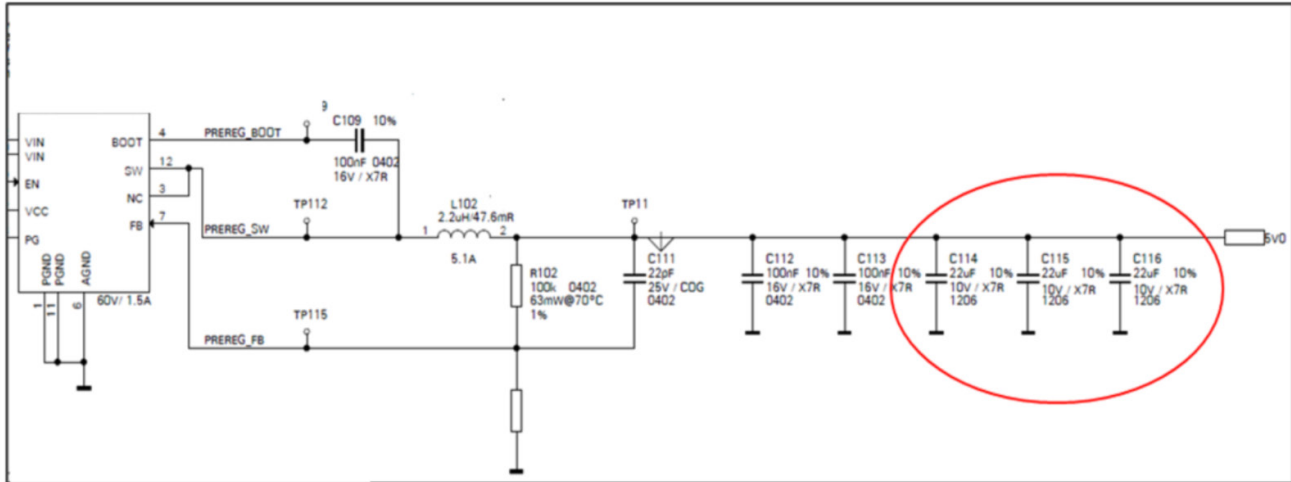
Figure 7 - AEC-Q200 qualified values of TCO high temperature +150°C Polymer series (* additional capacitors are in development)

Automotive power supply systems typically involve a network of series and parallel connected DC/DC converters to deliver numerous voltages from the main battery bus. A representative example would consist of a 12 V battery as the primary source being converted to 5.0 V, 3.3 V, and 1.8 V for electronic subsystems such as infotainment, cabin comfort control, and peripheral vehicle sensors. These DC/DC converters require filtering on both the input and output sides to absorb changes in load current and cope with electromagnetic interference (EMI) from surrounding systems.

While MLCC's are often the designer's first choice for low ESR, low-cost capacitors, they present challenges in the automotive environment due to DC bias capacitance reduction and a limited choice of capacitance/voltage combinations. As shown in Figure 8, polymer solid electrolytic capacitors can be used to complement MLCC filtering circuits by providing large bulk capacitance in a much smaller overall footprint.

POLYMER SOLID ELECTROLYTIC CAPACITORS FOR AUTOMOTIVE APPLICATIONS

AUTOMOTIVE APPLICATIONS



3x 1206/22uF could be replaced by 1x Polymer B case size/47uF TCQB476M010R0070E



Figure 8 - Using polymer capacitors in tandem with MLCC capacitors

KYOCERA AVX POLYMER SOLID CAPACITORS FOR EVs

The rapidly growing electric vehicle (EV) market uses at least ten times more electronic components than traditional combustion engine vehicles. The electronics industry struggles with the associated demand for capacitors, and MLCC Hi-CV capacitor shortages have become commonplace. AEC-Q200 polymer capacitors are an ideal alternative and provide a long-term solution to this supply chain crisis.

More importantly, polymer capacitors come with the added benefit of higher performance. They offer higher active capacitance than MLCC technology without voltage and temperature dependency. Compared to tantalum MnO₂ equivalents, polymer capacitors exhibit lower ESR and a benign failure mode.

Polymer devices offer a longer lifetime and surface-mount assembly than traditional aluminum technology. Finally, compared to the latest aluminum polymer and aluminum hybrid technologies, polymer tantalum capacitors are lower profile and simpler to assemble.

To learn more about KYOCERA AVX's tantalum polymer solid capacitors, visit: <https://www.kyocera-avx.com/products/tantalum/automotive/>



NORTH AMERICA
Tel: +1 864-967-2150

CENTRAL AMERICA
Tel: +55 11-46881960

EUROPE
Tel: +44 1276-697000

ASIA
Tel: +65 6286-7555

JAPAN
Tel: +81 740-321250

NOTICE: Specifications are subject to change without notice. Contact your nearest KYOCERA AVX Sales Office for the latest specifications. All statements, information and data given herein are believed to be accurate and reliable, but are presented without guarantee, warranty, or responsibility of any kind, expressed or implied. Statements or suggestions concerning possible use of our products are made without representation or warranty that any such use is free of patent infringement and are not recommendations to infringe any patent. The user should not assume that all safety measures are indicated or that other measures may not be required. Specifications are typical and may not apply to all applications.

[in](#) [f](#) [t](#) [@](#) [v](#)
WWW.KYOCERA-AVX.COM